

An aerial photograph showing a residential area with significant flooding. The water is a muddy brown color, inundating streets and yards. In the background, a river flows through a green, wooded area. The overall scene depicts the impact of a flood event on a community.

ECRS 2022 The 4th International Electronic Conference
on Remote Sensing 25-27 January 2022 | Online

Flood Mapping using the Sentinel-1 Imagery and the ESA STEP S1 Toolbox

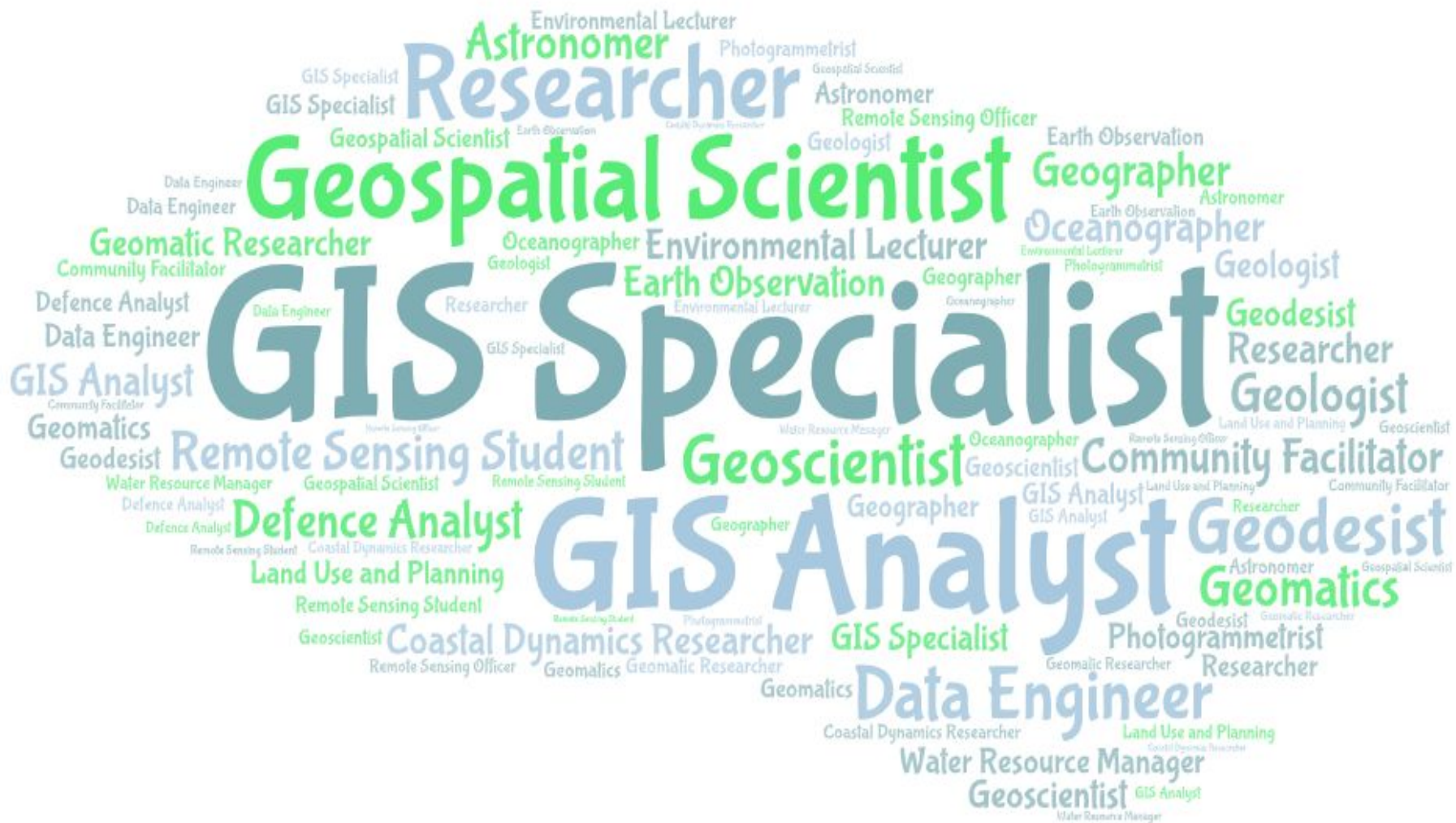
Luigi Selmi

lselmi@datiaperti.it

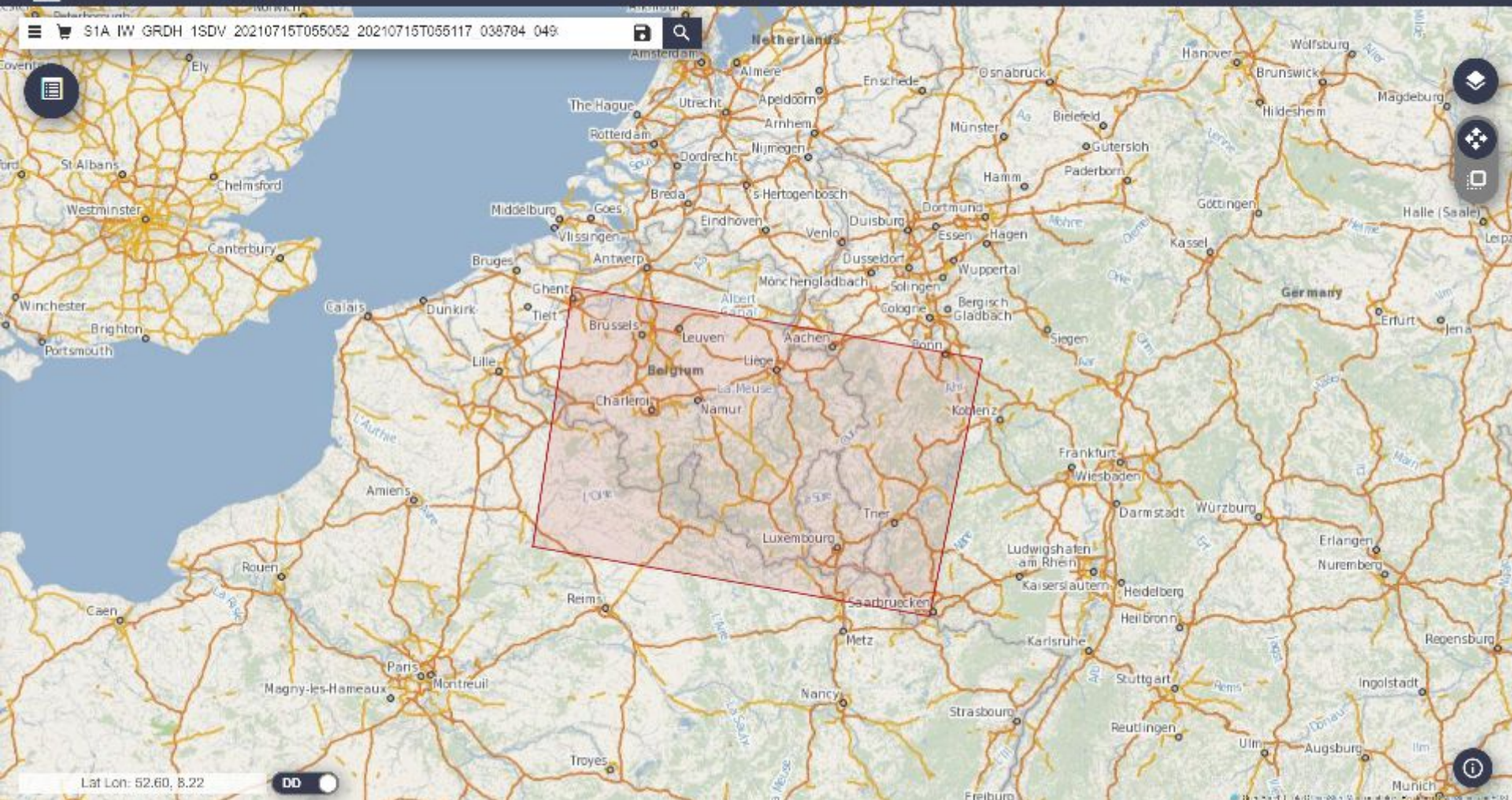
Floods are affecting communities more frequently than in the past.

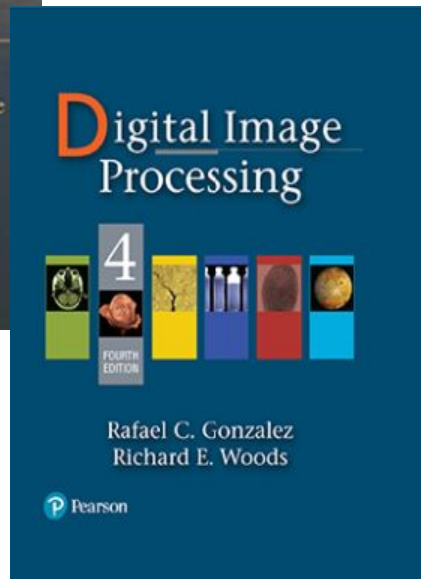
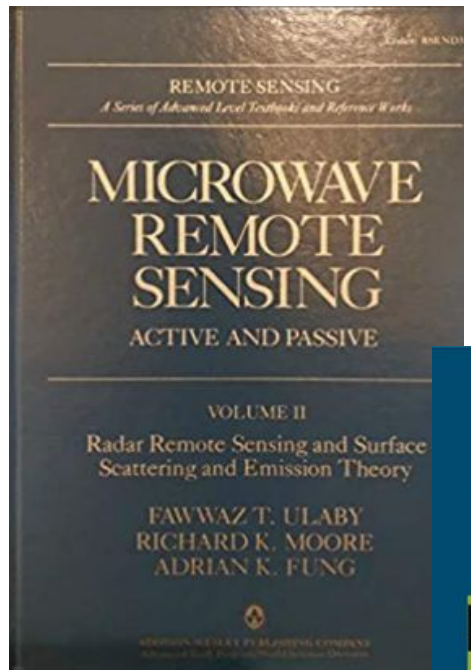
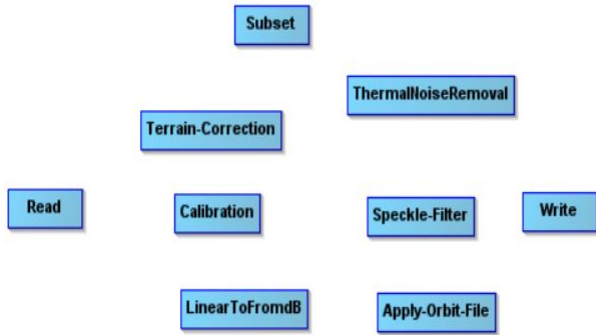
Enrico Pollastrini - Family saved from the flooding of Serchio, 1845






S1A IW GRDH 1SDV 20210715T055052 20210715T055117 038704 049



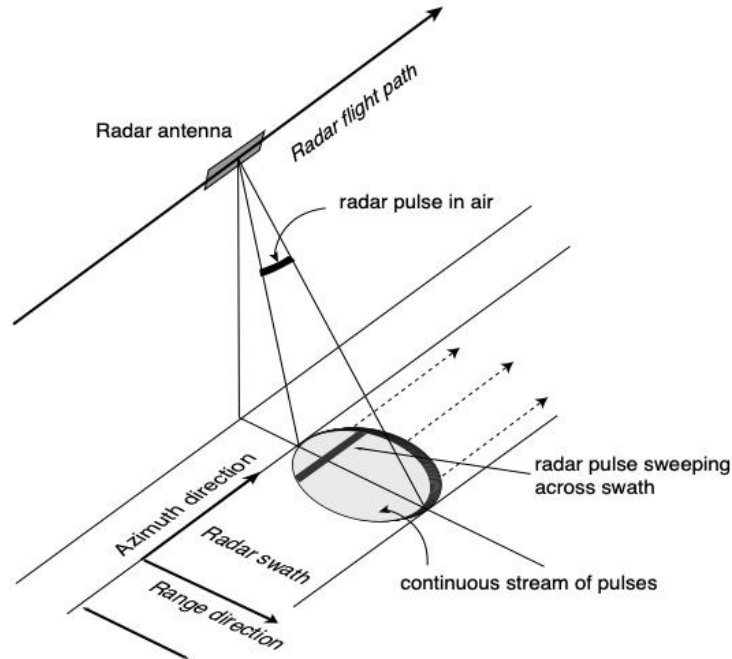


A satellite with a long array of solar panels is shown in orbit above the Earth. The satellite's main body is gold-colored and has a complex structure. The solar panels are dark blue and extend far behind the main body. The Earth's surface is visible below, showing a mix of blue oceans, white clouds, and brown/green landmasses. The background is the blackness of space with some stars.

Radar Remote Sensing
The Theoretical Minimum

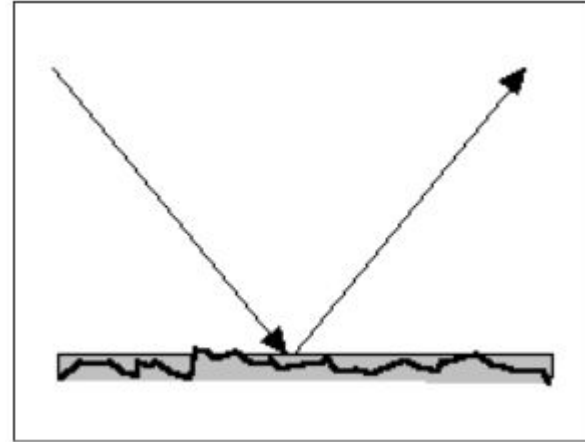
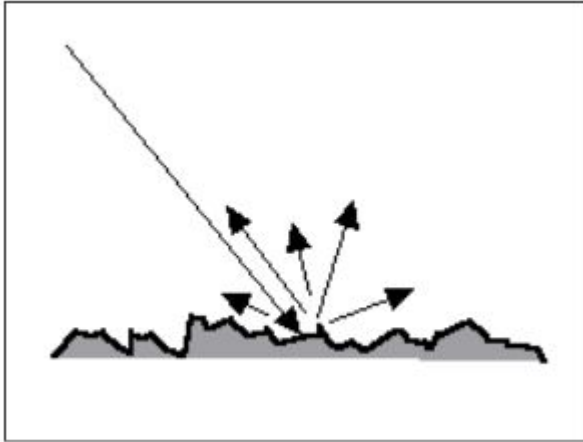
Radar Remote Sensing

Synthetic Aperture Radar



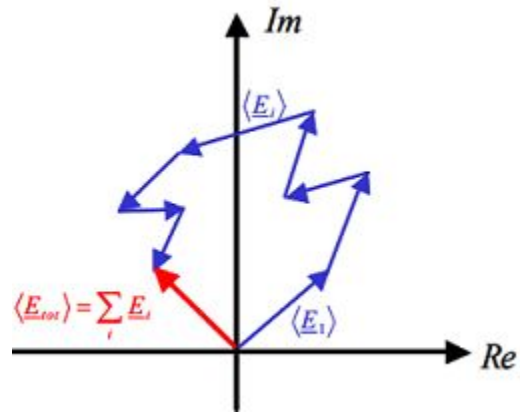
Radar Remote Sensing

Radar Backscattering



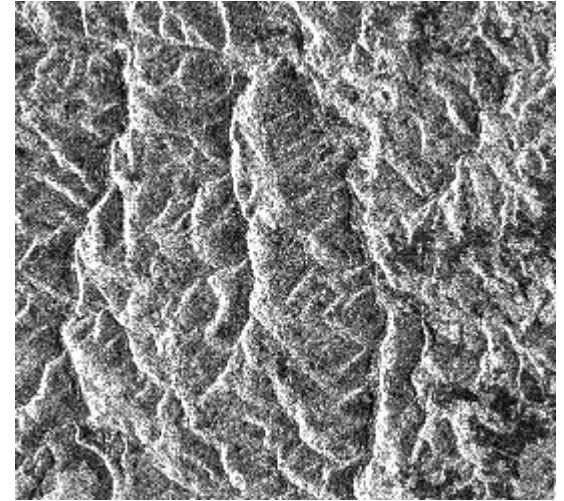
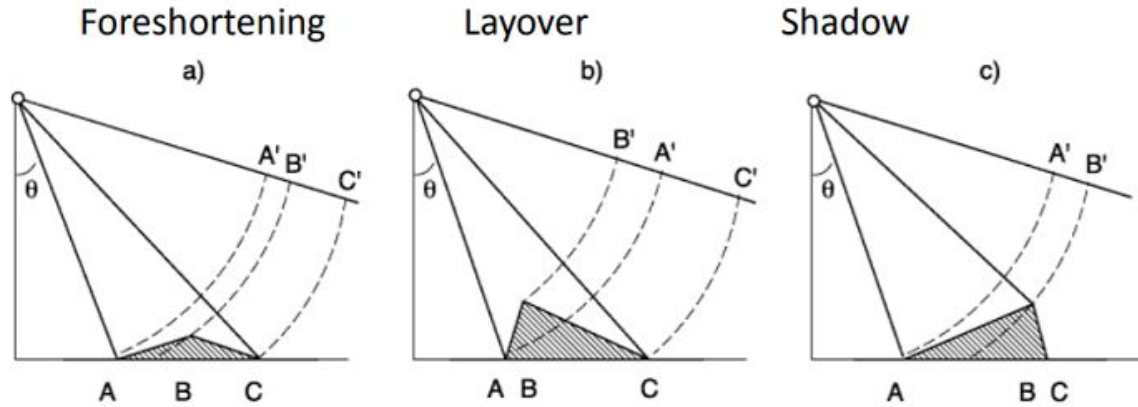
Radar Remote Sensing

Speckle



Radar Remote Sensing

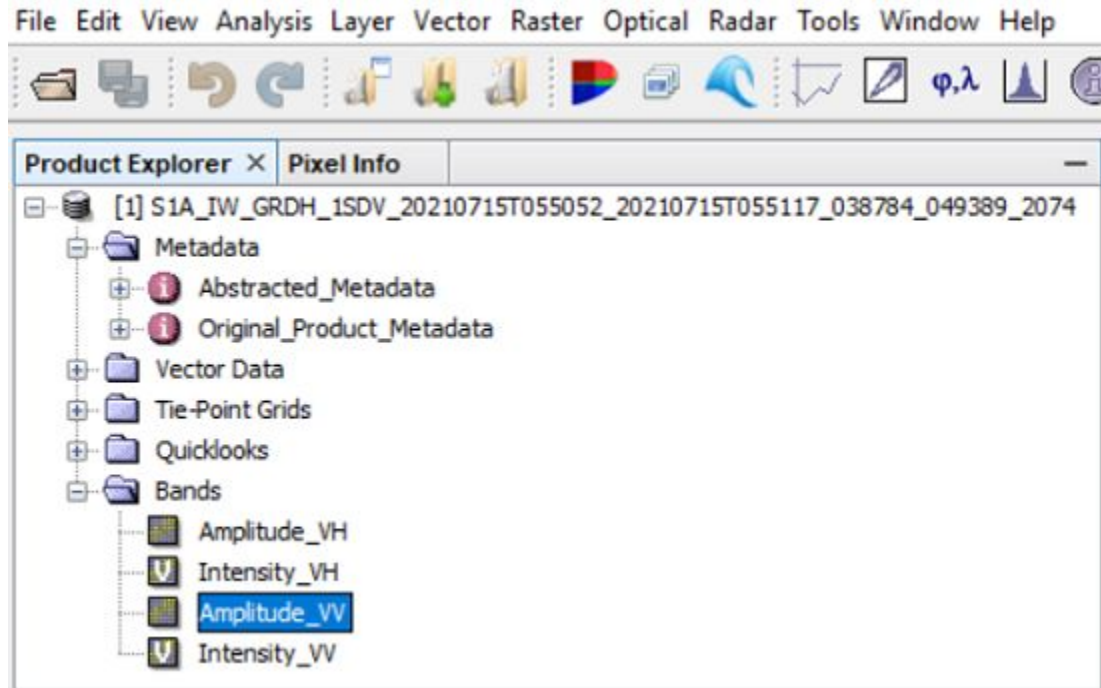
Geometric Distortions



SAR Image Processing

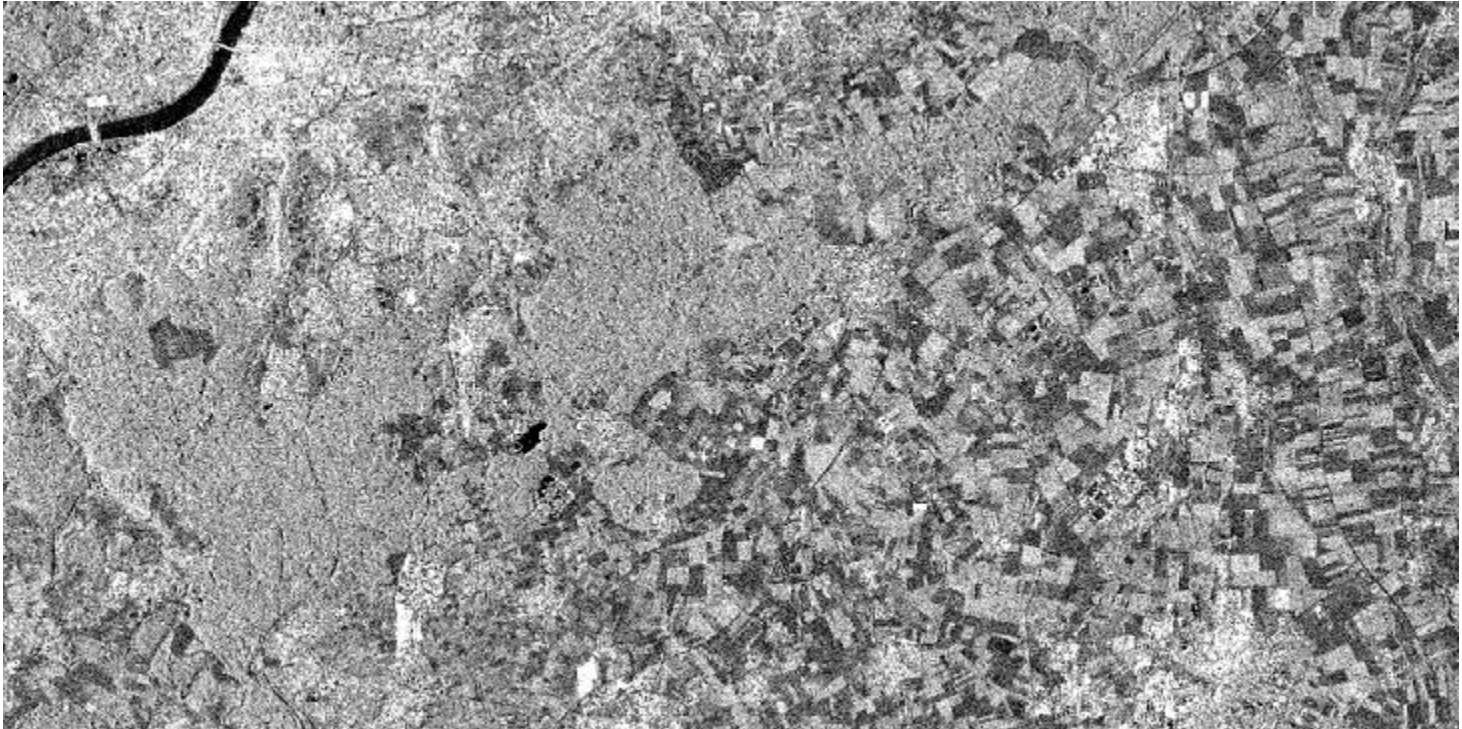
SAR Image Processing

The Sentinel-1 GRD Product



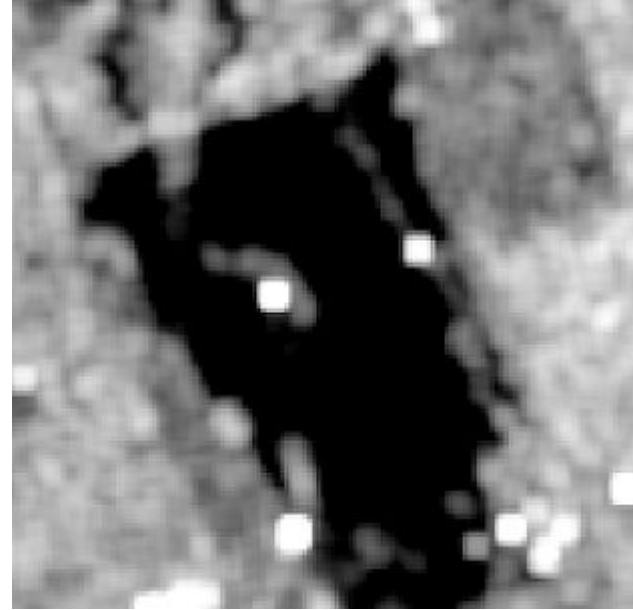
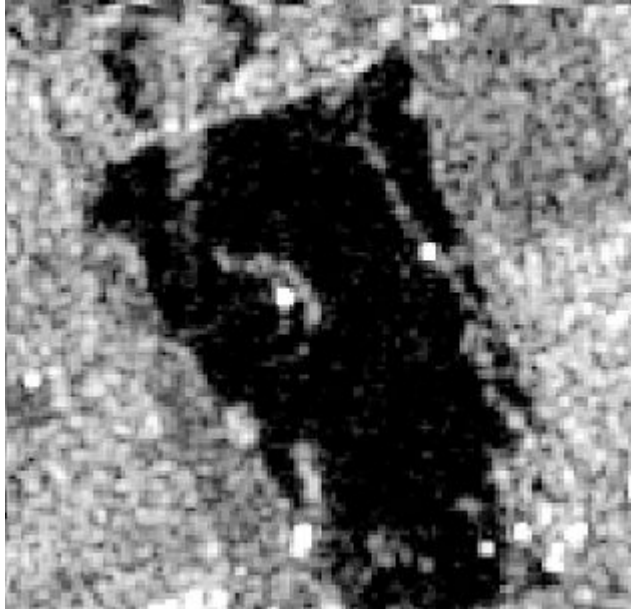
SAR Image Processing

Subsetting, Thermal Noise Removal, and Calibration



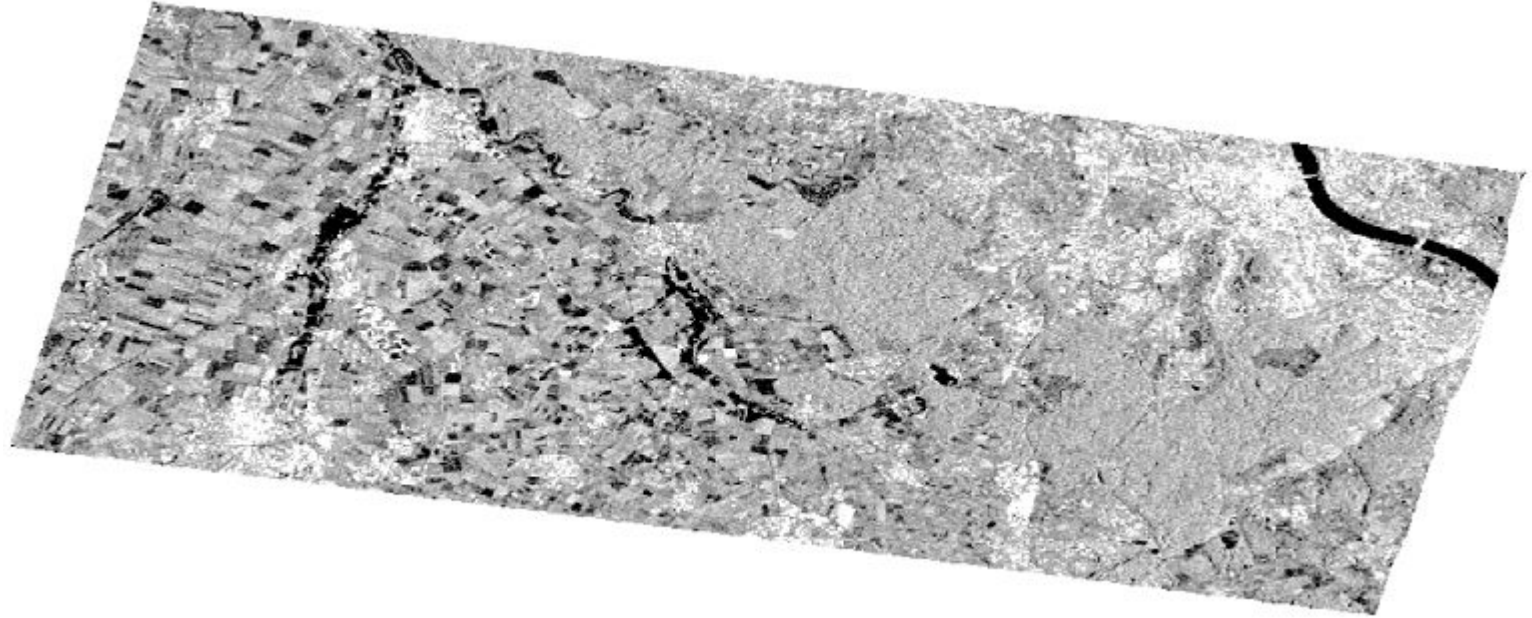
SAR Image Processing

Speckle reduction



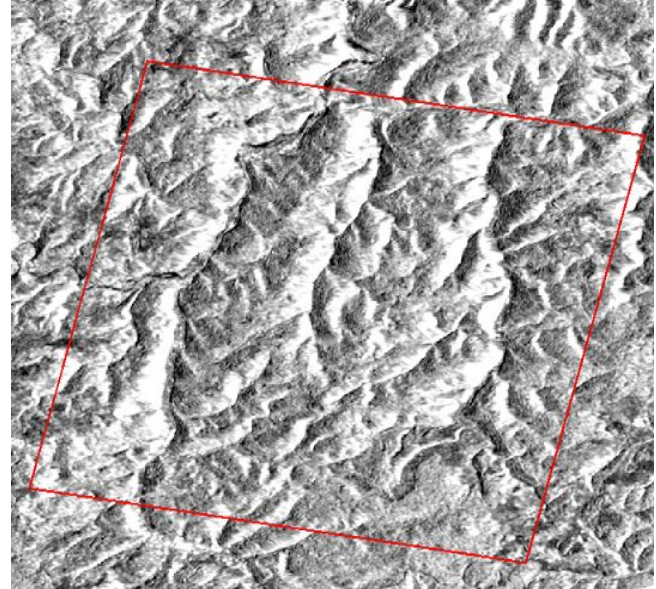
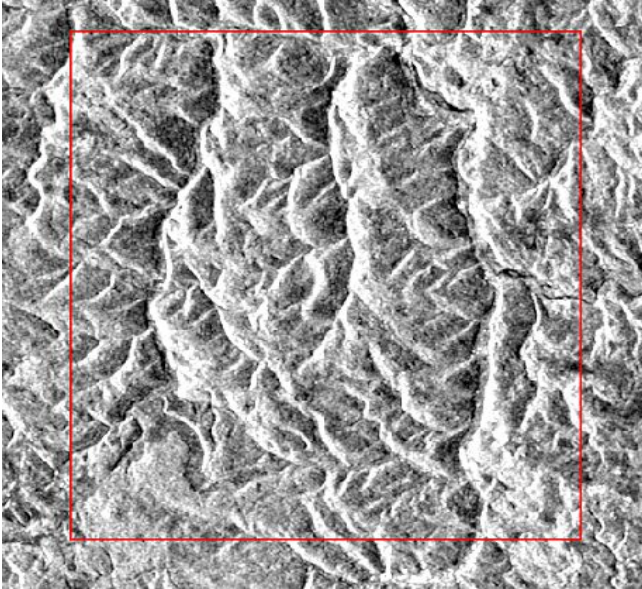
SAR Image Processing

Orbit file and Terrain correction



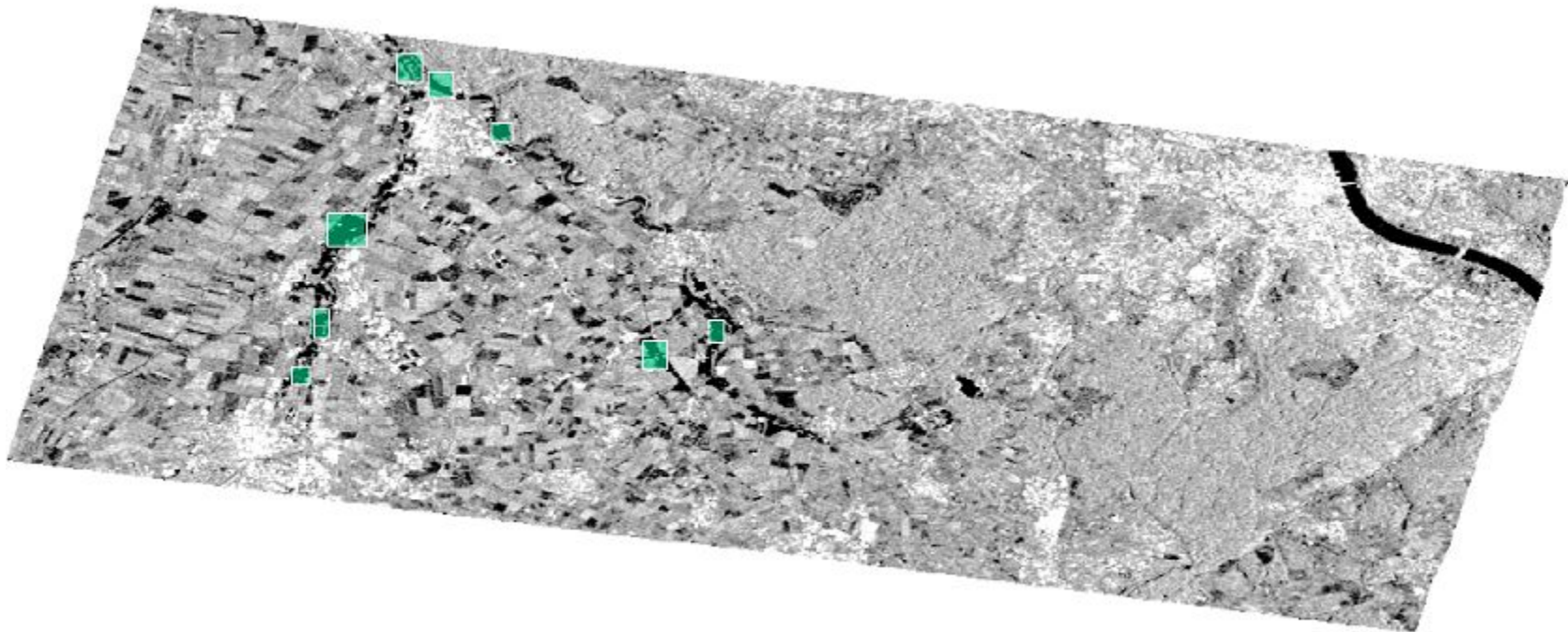
SAR Image Processing

Terrain correction over mountain areas



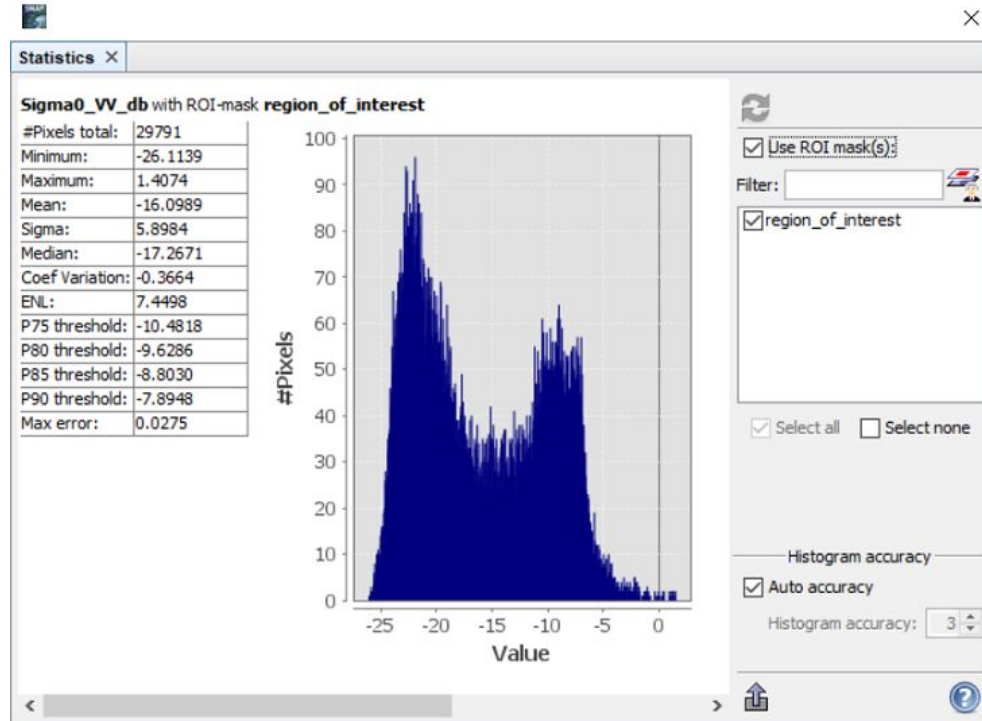
SAR Image Processing

Thresholding #1



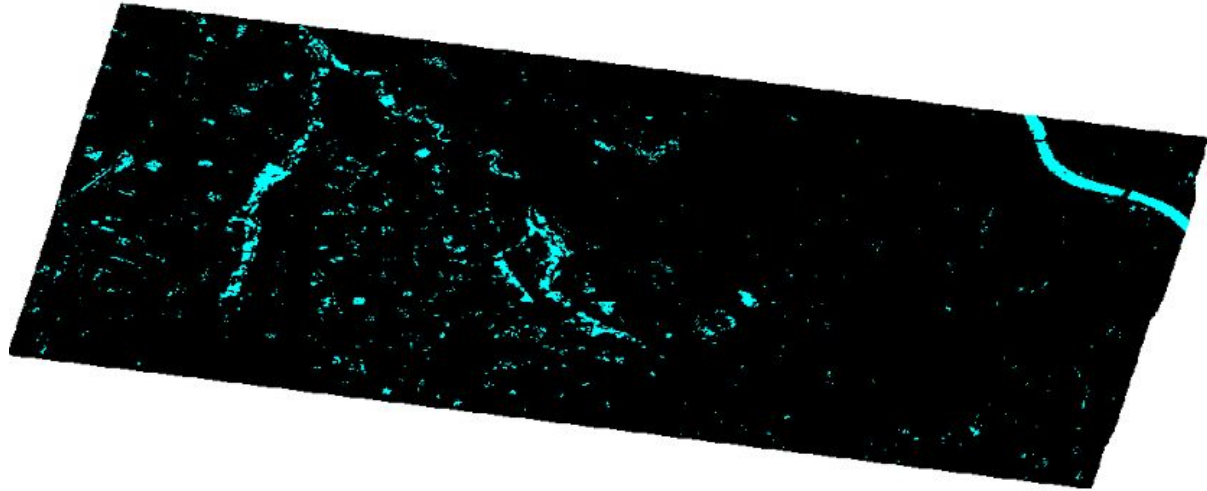
SAR Image Processing

Thresholding #2



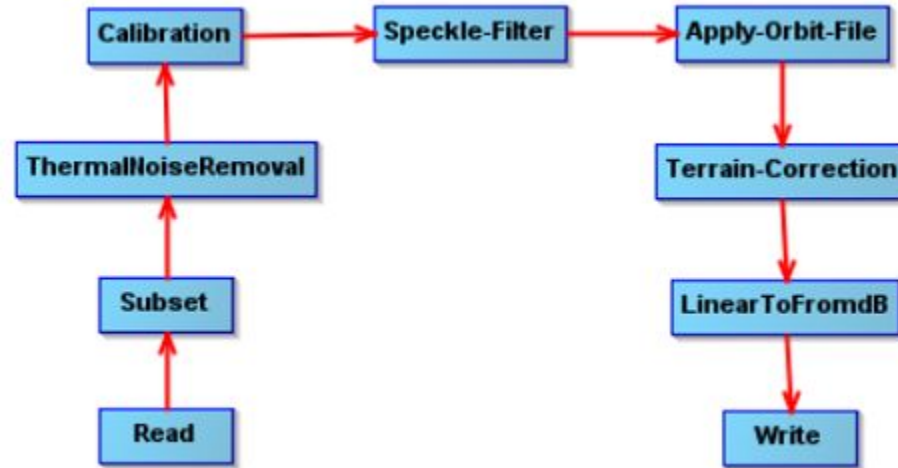
SAR Image Processing

Thresholding #3



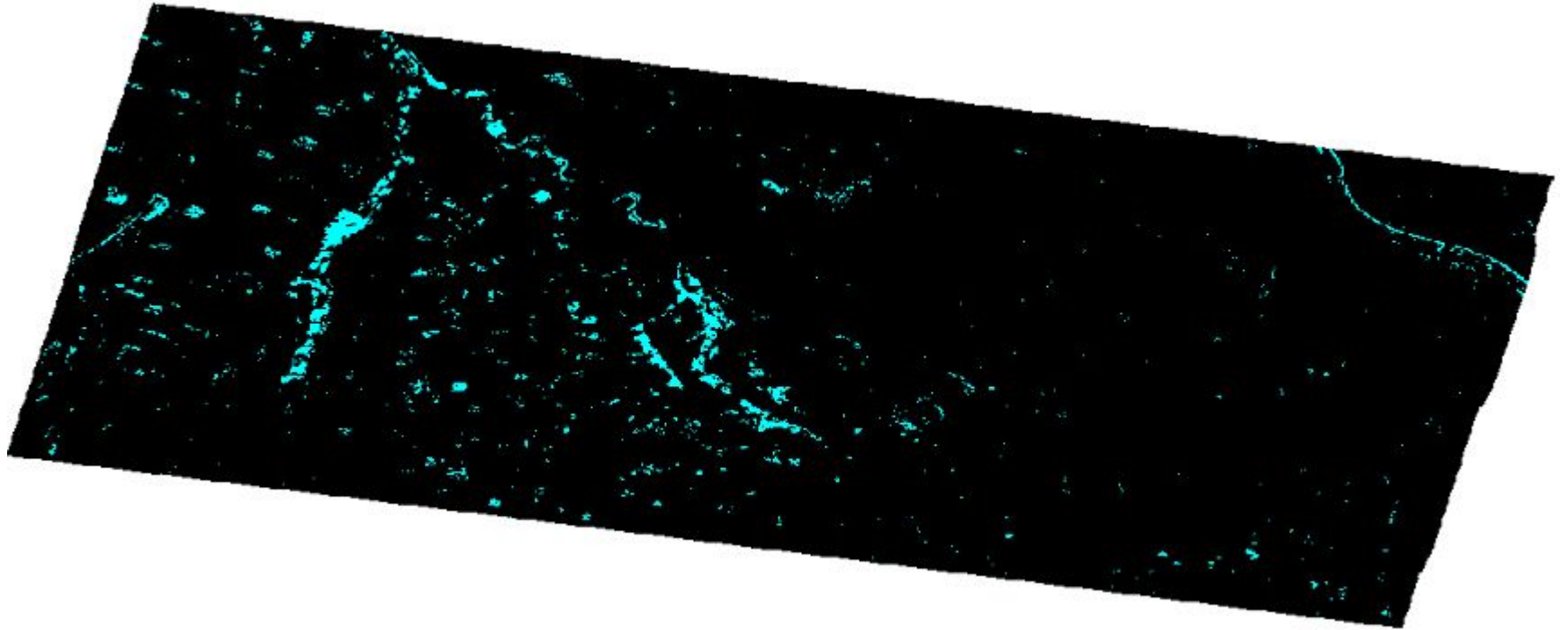
SAR Image Processing

Batch processing



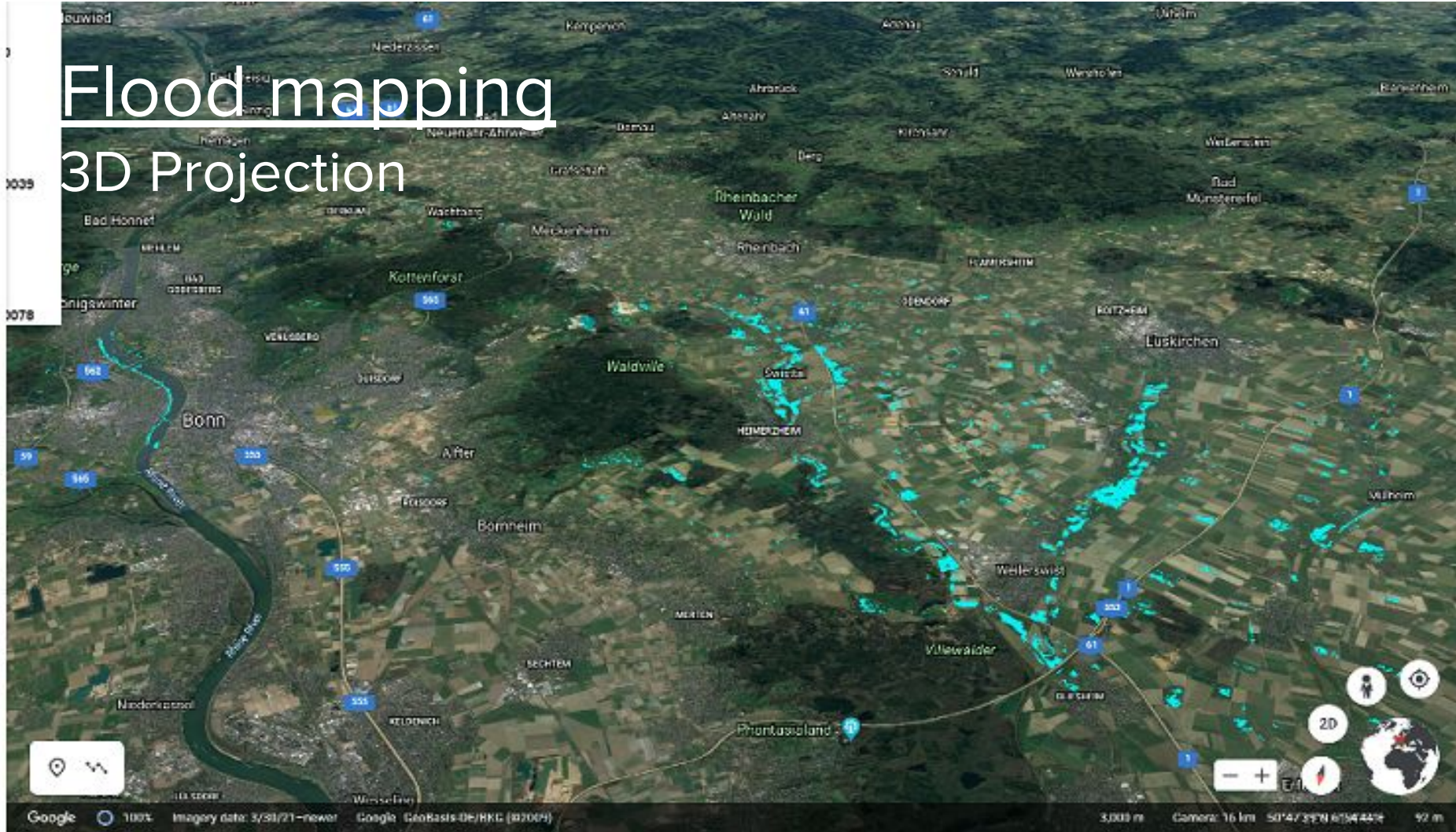
Flood mapping

flood = surface_water - water_bodies



Flood mapping

3D Projection

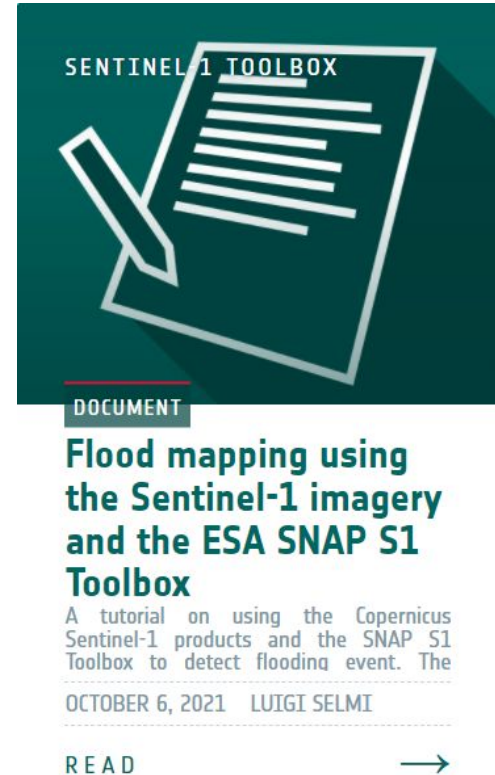


Conclusion

After one month of work:

Our tutorial “Flood mapping using the Sentinel-1 imagery and the ESA SNAP S1 Toolbox” has been included in the ESA STEP tutorials

58 positive reactions on LinkedIn by GIS and Remote Sensing specialists from all over the world



Next steps

Developing other tutorials to cover SAR interferometry and optical imagery from Copernicus Sentinel-2

Contact:

lselmi@datiaperti.it

